



Certificate No.  
**10.16.0973**

Date of Issue  
**19/01/2023**

Valid From  
**19/01/2023**

The Certificate is valid until  
**18/01/2028**

# CERTIFICATE OF CONFORMITY

## FULLNESS EXAMINATION OF TECHNICAL FILE

Applicant (Name & Address)	VELLE Electrical(Fujian) Co., Ltd. No.1 Building, immigration entrepreneurship Park, Shugang Road, Yunling Development Zone, Yunxiao County, Fujian Province, China
Manufacturer (Name & Address)	Same as applicant
Report No.	RoHS Report No.: LCSE102822010R
Product Description	M12 connector
Model(s)	M12P-M08T(VL), M12P-F08T(VL) (See Annex for details)
Directive(s)	2011/65/EU RoHS Directive
Standard(s)	EN IEC 63000:2018

This is to certify that, upon the relevant application of the above-mentioned applicant, EUROCERT as Third-Party Authority has reviewed the Technical Construction File of the described product, which found to fulfill the basic health and safety prerequisites of above-mentioned Directive(s).

**Note:**

- The manufacturer should issue a Declaration of Conformity according to the basic requirements of the applicable standards and relevant directives.
- The CE marking can be affixed on the above-mentioned product with the manufacturer's responsibility, if all relevant and applicable directives are complied with.
- All modifications to the Technical File should be first submitted to the Third-Party Inspection Authority to ensure further validity of this attestation
  - This certificate is valid only for the product and configuration described and in conjunction with the technical data detailed above.



Check the validity of the Certificate by scanning the QR code at right.  
EUROCERT S.A. 89 Chlois & Lykovriseos str., 144 52, Metamorphi – Greece  
T +30 210 62.52.495, +30 210 62.53.927, F +30 210 62.03.018, M eurocert@otenet.gr



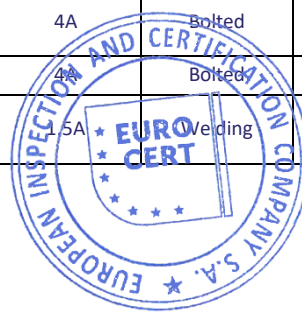


# ANNEX TO

## CERTIFICATE NO.: 10.16.0973

### Technical Characteristics of Model

No.	Model	Description	Rated voltage	Rated current (40°C)	Termination	Number of holes	Degree of protection
1	M12-M05T, M12-F05T	Field wiring screw crimping	125V	MAX.4A	Bolted	5Pin	IP65/IP67
2	M12-M04S, M12-F04S	Field wiring screw crimping	250V	MAX.4A	Bolted	4Pin	IP65/IP67
3	M12P-M04T, M12P-F04T	Field wiring screw crimping	250V	MAX.4A	Bolted	4Pin	IP65/IP67
4	M12P-M05S, M12P-F05S	Field wiring screw crimping	125V	MAX.4A	Bolted	5Pin	IP65/IP67
5	Y-M12-M05/2F04	Y-connector	60V	MAX.4A	Bolted	5Pin	IP65/IP67
6	Y-M12-F05/M05/F05B	Y-connector	60V	MAX.4A	Bolted	5Pin	IP65/IP67
7	Y-M12-M04/M8-2F04	Y-connector	60V	MAX.4A	Bolted	4Pin	IP65/IP67
8	T-M12-M05/2F04	T-connector	60V	MAX.4A	Bolted	5Pin	IP65/IP67
9	M12-M08T	Field erection	30V	2A	Bolted	8Pin	IP65/IP67
10	M12-F08T	Field erection	30V	2A	Bolted	8Pin	IP65/IP67
11	M12-M08S	Field erection	30V	2A	Bolted	8Pin	IP65/IP67
12	M12-F08S	Field erection	30V	2A	Bolted	8Pin	IP65/IP67
13	M12P-M08T(VL)	Field erection	30V	2A	Bolted	8Pin	IP65/IP67
14	M12P-F08T(VL)	Field erection	30V	2A	Bolted	8Pin	IP65/IP67
15	M12P-M08S	Field erection	30V	2A	Bolted	8Pin	IP65/IP67
16	M12P-F08S	Field erection	30V	2A	Bolted	8Pin	IP65/IP67
17	Y-M12-M04/2F04B	Field erection	60V	4A	Bolted	4Pin	IP65/IP67
18	Y-M12-M05/2F05A	Field erection	60V	4A	Bolted	5Pin	IP65/IP67
19	Y-M12-F04/M04/F04B	Field erection	60V	4A	Bolted	4Pin	IP65/IP67
20	Y-M12-M04/M8-2F03	Field erection	60V	4A	Bolted	4Pin	IP65/IP67
21	Y-M12-M04/M8-2F04	Field erection	60V	4A	Bolted	4Pin	IP65/IP67
22	T-M12-M04/2F04B	Field erection	60V	4A	Bolted	4Pin	IP65/IP67
23	FLQ-M12-F12(M16)-HB	Field erection	30V	5A	Welding	12Pin	IP67



Check the validity of the Certificate by scanning the QR code at right.  
 EUROCERT S.A. 89 Chlois & Lykovriseos str., 144 52, Metamorposi – Greece  
 T +30 210 62.52.495, +30 210 62.53.927, F +30 210 62.03.018, M eurocert@otenet.gr



# ANNEX TO

## CERTIFICATE NO.: 10.16.0973

### Technical Characteristics of Model

No.	Model	Description	Rated voltage	Rated current (40°C)	Termination	Number of holes	Degree of protection
24	FLQ-M12-M04(M12)-HB	Install the front flange connector behind the plate	250V	MAX.4A	Welding	4Pin	IP67
25	FLQ-M12-F05(PG9)-HB	Install the front flange connector behind the plate	125V	MAX.4A	Welding	5Pin	IP67
26	FLQ-M12-M04(M12)-PCB	Install the front flange connector behind the plate	250V	MAX.4A	Welding	4Pin	IP67
27	FLQ-M12-M05(PG9)-PCB	Install the front flange connector behind the plate	125V	MAX.4A	Welding	5Pin	IP67
28	FLQ-M12-M05(M16)-L	Install the front flange connector behind the plate	125V	MAX.4A	Welding	5Pin	IP67
29	FLQ-M12-F04(M12)-L	Install the front flange connector behind the plate	250V	MAX.4A	Welding	4Pin	IP67
30	FLH-M12-F04(PG9)-HB	Install the front flange connector behind the plate	250V	MAX.4A	Welding	4Pin	IP67
31	FLH-M12-M04(M16)-HB	Install the front flange connector behind the plate	250V	MAX.4A	Welding	4Pin	IP67
32	FLH-M12-F05(M16)-PCB	Install the front flange connector behind the plate	125V	MAX.4A	Welding	5Pin	IP67
33	FLH-M12-M05(M16)-PCB	Install the front flange connector behind the plate	125V	MAX.4A	Welding	5Pin	IP67
34	FLH-M12-M04(M16)-L	Install the front flange connector behind the plate	250V	MAX.4A	Welding	4Pin	IP67
35	FLH-M12-F05(M16)-L	Install the front flange connector behind the plate	125V	MAX.4A	Welding	5Pin	IP67
36	FL-M12-M05/F05(M16)	Two way flange	125V	MAX.4A	Welding	5Pin	IP67



Check the validity of the Certificate by scanning the QR code at right.  
 EUROCERT S.A. 89 Chlois & Lykovriseos str., 144 52, Metamorphosi – Greece  
 T +30 210 62.52.495, +30 210 62.53.927, F +30 210 62.03.018, M eurocert@otenet.gr

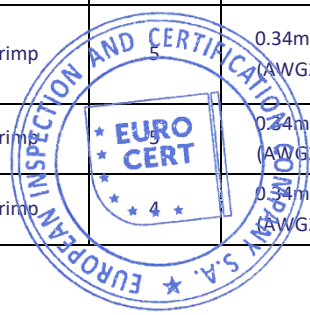


# ANNEX TO

## CERTIFICATE NO.: 10.16.0973

### Technical Characteristics of Model

No.	Model	Description	Rated voltage	Rated current (40°C)	Termination	Cable core number	Wire gauge	Degree of protection
37	M12-M04T-L	Single end pre cast harness	250V	MAX.4A	Crimp	4	0.34mm <sup>2</sup> (AWG22)	IP67
38	M12-F05T-L	Single end pre cast harness	125V	MAX.4A	Crimp	5	0.34mm <sup>2</sup> (AWG22)	IP67
39	M12-M04S-L	Single end pre cast harness	250V	MAX.4A	Crimp	4	0.34mm <sup>2</sup> (AWG22)	IP67
40	M12-F05S-L	Single end pre cast harness	125V	MAX.4A	Crimp	5	0.34mm <sup>2</sup> (AWG22)	IP67
41	M12-F04T-LED-L	Single end pre cast harness	24V	MAX.4A	Crimp	4	0.34mm <sup>2</sup> (AWG22)	IP67
42	M12-F04T-3LED-L	Single end pre cast harness	24V	MAX.4A	Crimp	4	0.34mm <sup>2</sup> (AWG22)	IP67
43	M12-F04S-LED-L	Single end pre cast harness	24V	MAX.4A	Crimp	4	0.34mm <sup>2</sup> (AWG22)	IP67
44	M12-F04S-3LED-L	Single end pre cast harness	24V	MAX.4A	Crimp	4	0.34mm <sup>2</sup> (AWG22)	IP67
45	M12-F05S-LED-L	Single end pre cast harness	24V	MAX.4A	Crimp	5	0.34mm <sup>2</sup> (AWG22)	IP67
46	M12P-M04T-L	Single end pre cast harness	250V	MAX.4A	Crimp	4	0.34mm <sup>2</sup> (AWG22)	IP67
47	M12P-F05T-L	Single end pre cast harness	125V	MAX.4A	Crimp	5	0.34mm <sup>2</sup> (AWG22)	IP67
48	M12P-M05S-L	Single end pre cast harness	125V	MAX.4A	Crimp	5	0.34mm <sup>2</sup> (AWG22)	IP67
49	M12P-F05S-L	Single end pre cast harness	125V	MAX.4A	Crimp	5	0.34mm <sup>2</sup> (AWG22)	IP67
50	M12-M04T/F04S-3LED-L	Double end pre cast harness	24V	MAX.4A	Crimp	4	0.34mm <sup>2</sup> (AWG22)	IP67
51	M12-M05T/F05T-LED-L	Double end pre cast harness	24V	MAX.4A	Crimp	5	0.34mm <sup>2</sup> (AWG22)	IP67
52	M12-F05T/M05T-L	Double end pre cast harness	125V	MAX.4A	Crimp	5	0.34mm <sup>2</sup> (AWG22)	IP67
53	M12-M04S/M04S-L	Double end pre cast harness	250V	MAX.4A	Crimp	4	0.34mm <sup>2</sup> (AWG22)	IP67



Check the validity of the Certificate by scanning the QR code at right.  
 EUROCERT S.A. 89 Chlois & Lykovriseos str., 144 52, Metamorphosi – Greece  
 T +30 210 62.52.495, +30 210 62.53.927, F +30 210 62.03.018, M eurocert@otenet.gr

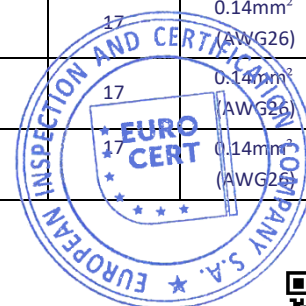


# ANNEX TO

## CERTIFICATE NO.: 10.16.0973

### Technical Characteristics of Model

No.	Model	Description	Rated voltage	Rated current (40°C)	Termination	Cable core number	Wire gauge	Degree of protection
54	M12P-M05S/M05S-L	Double end pre cast harness	125V	MAX.4A	Crimp	5	0.34mm <sup>2</sup> (AWG22)	IP67
55	M12P-M04S/F04S-L	Double end pre cast harness	250V	MAX.4A	Crimp	4	0.34mm <sup>2</sup> (AWG22)	IP67
56	M12-M05S/F05S-L	Double end pre cast harness	125V	MAX.4A	Crimp	5	0.34mm <sup>2</sup> (AWG22)	IP67
57	M12-M04S/F04T-3LED-L	Double end pre cast harness	24V	MAX.4A	Crimp	4	0.34mm <sup>2</sup> (AWG22)	IP67
58	M12-M05S/F05S-LED-L	Double end pre cast harness	24V	MAX.4A	Crimp	5	0.34mm <sup>2</sup> (AWG22)	IP67
59	M12P-M04T/M04T-L	Double end pre cast harness	250V	MAX.4A	Crimp	4	0.34mm <sup>2</sup> (AWG22)	IP67
60	M12P-M05S/F05S-L	Double end pre cast harness	125V	MAX.4A	Crimp	5	0.34mm <sup>2</sup> (AWG22)	IP67
61	Y-M12-M04/2F03T-L	M12 Y-type connecting harness	250V	MAX.4A	Crimp	3	0.34mm <sup>2</sup> (AWG22)	IP67
62	Y-M12-M04/2F03T-LED-L	M12 Y-type connecting harness	24V	MAX.4A	Crimp	3	0.34mm <sup>2</sup> (AWG22)	IP67
63	Y-M12-M04/M8-2F03T-L	M12 Y-type connecting harness	250V	MAX.4A	Crimp	3	0.25mm <sup>2</sup> (AWG24)	IP67
64	Y-M12-M04/M8-F03-LED-L	M12 Y-type connecting harness	24V	MAX.4A	Crimp	3	0.25mm <sup>2</sup> (AWG24)	IP67
65	Y-M12-M04/M8-2F03S-LED-L	M12 Y-type connecting harness	24V	MAX.4A	Crimp	3	0.25mm <sup>2</sup> (AWG24)	IP67
66	M12-M17S-L	Single-end and double-end	30V	1.5A	Crimp	17	0.14mm <sup>2</sup> (AWG26)	IP67
67	M12-F17S-L	Single-end and double-end	30V	1.5A	Crimp	17	0.14mm <sup>2</sup> (AWG26)	IP67
68	M12-M17T-L	Single-end and double-end	30V	1.5A	Crimp	17	0.14mm <sup>2</sup> (AWG26)	IP67
69	M12-F17T-L	Single-end and double-end	30V	1.5A	Crimp	17	0.14mm <sup>2</sup> (AWG26)	IP67
70	M12P-M17S-L	Single-end and double-end	30V	1.5A	Crimp	17	0.14mm <sup>2</sup> (AWG26)	IP67



Check the validity of the Certificate by scanning the QR code at right.  
 EUROCERT S.A. 89 Chlois & Lykovriseos str., 144 52, Metamorposi – Greece  
 T +30 210 62.52.495, +30 210 62.53.927, F +30 210 62.03.018, M eurocert@otenet.gr



# ANNEX TO

## CERTIFICATE NO.: 10.16.0973

### Technical Characteristics of Model

No.	Model	Description	Rated voltage	Rated current (40°C)	Termination	Cable core number	Wire gauge	Degree of protection
71	M12P-F17S-L	Single-end and double-end	30V	1.5A	Crimp	17	0.14mm <sup>2</sup> (AWG26)	IP67
72	M12P-M17T/F17T-L	Single-end and double-end	30V	1.5A	Crimp	17	0.14mm <sup>2</sup> (AWG26)	IP67
73	M12-M17T/M17S-L	Single-end and double-end	30V	1.5A	Crimp	17	0.14mm <sup>2</sup> (AWG26)	IP67
74	Y-M12-F04/2M04T-L	Single-end and double-end	250V	4A	Crimp	4	0.34mm <sup>2</sup> (AWG22)	IP67
75	Y-M12-M04/2F04T-L	Single-end and double-end	250V	4A	Crimp	4	0.34mm <sup>2</sup> (AWG22)	IP67



Check the validity of the Certificate by scanning the QR code at right.  
EUROCERT S.A. 89 Chlois & Lykovriseos str., 144 52, Metamorphosi – Greece  
T +30 210 62.52.495, +30 210 62.53.927, F +30 210 62.03.018, M eurocert@otenet.gr